

Variations

Male Connector **KQB2H**

Metric	R thread	p. 39
	G thread	p. 54
Inch		p. 47



Bulkhead Union **KQB2E**

Metric	p. 41
Inch	p. 49



Different Diameter Union "Y" **KQB2U**

Metric	p. 42
Inch	p. 50



Hexagon Socket Head Male Connector **KQB2S**

Metric	R thread	p. 39
	G thread	p. 54
Inch		p. 47



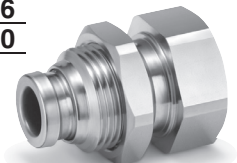
Union Tee **KQB2T**

Metric	p. 41
Inch	p. 49



Bulkhead Connector **KQB2E**

Metric	Rc thread	p. 43
	G thread	p. 56
Inch		p. 50



Straight Union **KQB2H**

Metric	p. 39
Inch	p. 47



Union "Y" **KQB2U**

Metric	p. 41
Inch	p. 49



Extended Male Elbow **KQB2W**

Metric	R thread	p. 43
	G thread	p. 56
Inch		p. 50



Male Elbow **KQB2L**

Metric	R thread	p. 40
	G thread	p. 55
Inch		p. 48



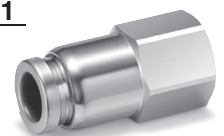
Different Diameter Tee **KQB2T**

Metric	p. 42
Inch	p. 49



Female Connector **KQB2F**

Metric	Rc thread	p. 44
	G thread	p. 56
Inch		p. 51



Male Branch Tee **KQB2T**

Metric	R thread	p. 40
	G thread	p. 55
Inch		p. 48



Plug-in Reducer **KQB2R**

Metric	p. 42
Inch	p. 49



Plug **KQB2P**

Metric	p. 44
Inch	p. 51



Union Elbow **KQB2L**

Metric	p. 41
Inch	p. 48



Different Diameter Straight **KQB2H**

Metric	p. 42
Inch	p. 50



EHEHG
Compliant

Metric M, G
KFG2H□-E

Clean
Design

Metric M, G
KFG2H□-C

FDA
Compliant

Metric M, R, Rc
KQG2-F

Inch UNF, NPT
KQG2-F

Metric G
KQG2-F

Metric M, R, Rc
KQB2-F

Inch UNF, NPT
KQB2-F

Metric G
KQB2-F

Metric R, Rc
KFG2-F

Inch NPT
KFG2-F

Metric G
KFG2-F

Precautions

Metal One-touch Fittings

Applicable Tubing: Metric Size, Connection Thread: M, R, Rc

KQB2-F Series



Applicable Tubing

Tubing material*1	FEP, PFA, Nylon, Soft nylon, Polyurethane, Polyolefin
Tubing O.D.	Ø 3.2, Ø 4, Ø 6, Ø 8, Ø 10, Ø 12, Ø 16

*1 Considering the product application, FDA-compliant products are recommended.

Specifications

Fluid	Air, Water*1
Operating pressure range*2	-100 kPa to 1 MPa*3
Proof pressure	3.0 MPa
Ambient and fluid temperatures*4	-5 to 150°C (No freezing)*3
Lubricant	NSF H1 grease
Seal on the threads	Without sealant

*1 Deionised water is not recommended for use as it may affect the material used in the fittings. In addition, it is known to degrade the water quality.

*2 Do not use the fittings with a leak tester or for vacuum retention because they are not guaranteed for zero leakage.

*3 Check the operating pressure range and operating temperature range of the tubing.

*4 It is recommended that you use the inner sleeve in the following conditions. (Except Ø 3.2)

- When using in an environment where the fluid temperature changes drastically
- When using at a high temperature

* Temperature Condition of Mounting the Inner Sleeve

Tubing	Temperature
FEP tubing/TH series	80°C or more
Super PFA tubing/TL series	120°C or more

Spare Parts

Description	Tubing O.D.	Part no.	Material
O-ring	—	M-5-F	FDA compliant FKM
Bulkhead nut	Ø 3.2 Ø 4	KQB223-P01-F	C3604 (Electroless nickel plating)
	Ø 6	KQB206-P01-F	
	Ø 8	KQB208-P01-F	
	Ø 10	KQB210-P01-F	
	Ø 12	KQB212-P01-F	
	Ø 16	KQB216-P01-F	

Cross Reference Table of the Inner Sleeve

Tubing O.D.	Tubing material			Applicable inner sleeve	
	TUS (Soft polyurethane)	TH/THI (FEP)	TL/TIL (Super PFA)	Part no.	Length
Ø 4	—	TH0402	—	TJG-0402	18
	TUS0425	TH0425	—	TJG-0425	18
	—	—	TL0403	TJG-0403	18
Ø 6	TUS0604	TH0604	TL0604	TJG-0604	19
	TUS0805	—	—	TJG-0805	20.5
Ø 8	—	TH0806	TL0806	TJG-0806	20.5
	TUS1065	—	—	TJG-1065	23
Ø 10	—	TH1075	—	TJG-1075	23
	—	TH1008	TL1008	TJG-1008	24
	TUS1208	—	—	TJG-1208	24
Ø 12	—	TH1209	—	TJG-1209	24
	—	TH1210	TL1210	TJG-1210	24
	—	—	—	—	—

* Stainless steel 316 is used for the TJG series.

How to Order

KQB2 H 04 - 02 - F

Body type

Symbol	Model
H	Male connector, Straight union, Different diameter straight
S	Hexagon socket head male connector
L	Male elbow, Union elbow
T	Male branch tee, Union tee, Different diameter tee
E	Bulkhead union, Bulkhead connector
U	Union "Y", Different diameter union "Y"
R	Plug-in reducer
W	Extended male elbow
F	Female connector
P	Plug

FDA compliant

Thread size, Tubing size

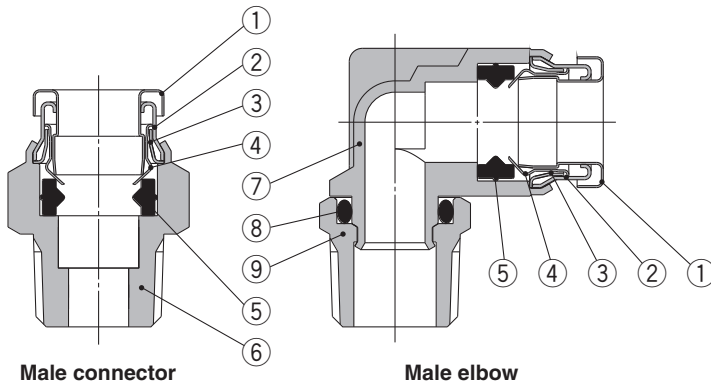
Symbol	Size	
M5	M5 x 0.8	Thread size
01	R1/8, Rc1/8	
02	R1/4, Rc1/4	
03	R3/8, Rc3/8	
04	R1/2, Rc1/2	Tubing size
00	Same tubing O.D.	
04	Ø 4	
06	Ø 6	
08	Ø 8	
10	Ø 10	
12	Ø 12	
16	Ø 16	

Tubing size (Metric)

Symbol	Size
23	Ø 3.2
04	Ø 4
06	Ø 6
08	Ø 8
10	Ø 10
12	Ø 12
16	Ø 16

* Sealant is unavailable for this product as no FDA-compliant material is available.

Construction



Component Parts

No.	Description	Material
1	Release button	Stainless steel 304
2	Guide 1	Stainless steel 304
3	Guide 2	Stainless steel 304
4	Chuck	Stainless steel 304
5	Seal	FDA compliant FKM (NSF H1 grease)
6	Male connector body	C3604 (Electroless nickel plating)
7	Male elbow body	Stainless steel 316
8	O-ring	FDA compliant FKM (NSF H1 grease)
9	Stud	C3604 (Electroless nickel plating)

EHEDG Compliant

Metric M, G KFG2H□-E

Clean Design

Metric M, G KFG2H□-C

FDA Compliant

Metric M, R, Rc KQG2-F

Inch UNF, NPT KQG2-F

Metric G KQG2-F

Metric M, R, Rc KQB2-F

Inch UNF, NPT KQB2-F

Metric G KQB2-F

Metric R, Rc KFG2-F

Inch NPT KFG2-F

Metric G KFG2-F

Precautions

KQB2-F Series

Applicable Tubing: Metric Size, Connection Thread: M, R, Rc

Dimensions

Union Elbow: KQB2L

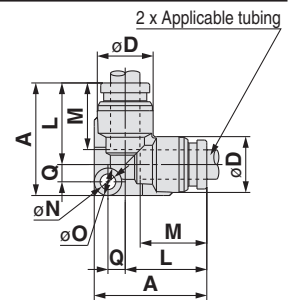


Applicable tubing O.D. [mm]	Model	Ø D ^{*1}	L	A	Q	M	Ø N	Ø O	Effective area [mm ²] ^{*2}	Weight [g]
Ø 3.2	KQB2L23-00-F	8.3	13.6	19.3	2.9	12	3.2	5.6	3	6.3
Ø 4	KQB2L04-00-F	9.1	14.6	20.5	3.1	12.6	3.2	5.6	4.2	7.4
Ø 6	KQB2L06-00-F	11.4	16.6	23	3.6	13.6	3.2	5.6	11.4	11
Ø 8	KQB2L08-00-F	13.7	20.1	29.1	5	16.1	4.2	8	21.6	20.2
Ø 10	KQB2L10-00-F	16.6	22	31.7	5.7	17	4.2	8	35.2	29.6
Ø 12	KQB2L12-00-F	18.7	24.6	35	6.4	18.6	4.2	8	50.2	37.1
Ø 16	KQB2L16-00-F	24.6	28.8	40.5	7.7	20.8	4.2	8	100	59.7

*1 For the Ø 16, this dimension refers to the O.D. of the release button.

*2 Value of FEP tubing

Value of nylon tubing for Ø 16 only



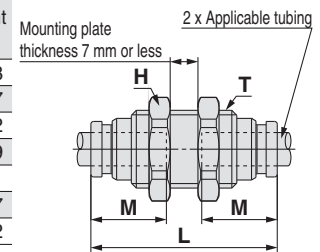
Bulkhead Union: KQB2E



Applicable tubing O.D. [mm]	Model	T (M)	H (Width across flats)	L	Mounting hole	M	Effective area [mm ²] ^{*1}	Weight [g]
Ø 3.2	KQB2E23-00-F	M10 x 1	12	32.2	11	12	3.4	14.8
Ø 4	KQB2E04-00-F	M10 x 1	12	32.4	11	12.6	5.6	14.7
Ø 6	KQB2E06-00-F	M14 x 1	17	35.4	15	13.6	13.1	29.2
Ø 8	KQB2E08-00-F	M15 x 1	19	38.8	16	16.1	26.1	34.9
Ø 10	KQB2E10-00-F	M18 x 1	21	40	19	17	41.5	47.1
Ø 12	KQB2E12-00-F	M20 x 1	24	42.4	21	18.6	58.3	58.7
Ø 16	KQB2E16-00-F	M27 x 1	30	46.8	28	20.8	113	107.2

*1 Value of FEP tubing

Value of nylon tubing for Ø 16 only



Union Tee: KQB2T

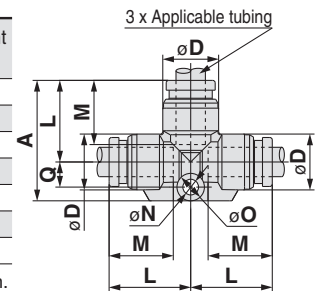


Applicable tubing O.D. [mm]	Model	Ø D ^{*1}	L	A	Q	M	Ø N	Ø O	Effective area [mm ²] ^{*2}	Weight [g]
Ø 3.2	KQB2T23-00-F	8.3	13.6	20.5	4.1	12	3.2	5.6	3.4	7.9
Ø 4	KQB2T04-00-F	9.1	14.6	21.8	4.4	12.6	3.2	5.6	6.4	9.5
Ø 6	KQB2T06-00-F	11.4	16.6	24.6	5.2	13.6	3.2	5.6	13.4	14.2
Ø 8	KQB2T08-00-F	13.7	20.1	31.1	7	16.1	4.2	8	25.6	24.4
Ø 10	KQB2T10-00-F	16.6	22	34	8	17	4.2	8	40	36.8
Ø 12	KQB2T12-00-F	18.7	24.6	37.7	9.1	18.6	4.2	8	57.4	47
Ø 16	KQB2T16-00-F	24.6	28.8	43.4	10.6	20.8	4.2	8	100	75.5

*1 For the Ø 16, this dimension refers to the O.D. of the release button.

*2 Value of FEP tubing

Value of nylon tubing for Ø 16 only



Union "Y": KQB2U

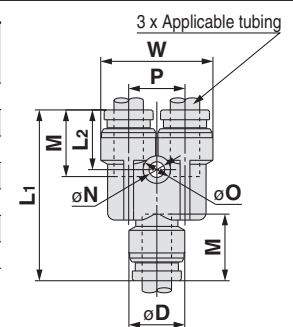


Applicable tubing O.D. [mm]	Model	Ø D ^{*1}	W	L ₁	L ₂	P	M	Ø N	Ø O	Effective area [mm ²] ^{*2}	Weight [g]
Ø 3.2	KQB2U23-00-F	8.3	16.4	29	11	8.1	12	3.2	5.6	3.4	9.2
Ø 4	KQB2U04-00-F	9.1	18.2	30.4	11.3	9.1	12.6	3.2	5.6	4.2	11.1
Ø 6	KQB2U06-00-F	11.4	22.9	34.9	12.2	11.5	13.6	3.2	5.6	13.4	18.8
Ø 8	KQB2U08-00-F	13.7	28.3	40.1	14.1	14.6	16.1	4.2	8	25.6	29.7
Ø 10	KQB2U10-00-F	16.6	34.2	44	14.4	17.6	17	4.2	8	40	47.4
Ø 12	KQB2U12-00-F	18.7	38.5	48.4	15.8	19.8	18.6	4.2	8	57.4	62.1
Ø 16	KQB2U16-00-F	24.6	49.3	56.6	17.3	26	20.8	4.2	8	113	110.2

*1 For the Ø 16, this dimension refers to the O.D. of the release button.

*2 Value of FEP tubing

Value of nylon tubing for Ø 16 only

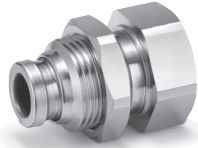


KQB2-F Series

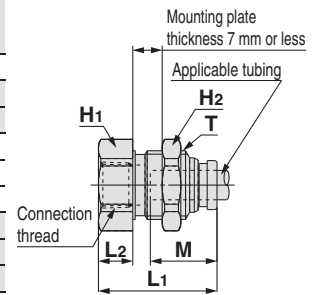
Applicable Tubing: Metric Size, Connection Thread: M, R, Rc

Dimensions

Bulkhead Connector: KQB2E



Applicable tubing O.D. (mm)	Connection thread Rc	Model	T (M)	Width across flats		L1	L2	Mounting hole	M	Effective area ^{*1} [mm ²]	Weight [g]
				H1	H2						
Ø 3.2	1/4	KQB2E23-02-F	M10 x 1	17	12	31	14.8	11	12	3.4	27.5
Ø 4	1/8	KQB2E04-01-F	M10 x 1	14	12	25.8	9.7	11	12.6	5.6	16.9
	1/4	KQB2E04-02-F		17		30.9	14.8				27.1
Ø 6	1/8	KQB2E06-01-F	M14 x 1	17	17	24.2	6.1	15	13.6	13.1	25
	1/4	KQB2E06-02-F				31.6	13.5				33.2
	3/8	KQB2E06-03-F				33	14.9				34.8
Ø 8	1/8	KQB2E08-01-F	M15 x 1	17	19	26.3	6.9	16	16.1	26.1	28.7
	1/4	KQB2E08-02-F				32.4	13				34.2
	3/8	KQB2E08-03-F				34	14.6				35.9
Ø 10	1/4	KQB2E10-02-F	M18 x 1	19	21	31.6	11.6	19	17	41.5	44
	3/8	KQB2E10-03-F				33.6	13.6				40.2
Ø 12	3/8	KQB2E12-03-F	M20 x 1	21	24	34	12.8	21	18.6	58.3	52
	1/2	KQB2E12-04-F				39.6	18.4				62.5
Ø 16	3/8	KQB2E16-03-F	M27 x 1	29	30	35.3	11.2	28	20.8	96	111
	1/2	KQB2E16-04-F				40.6	16.5				113

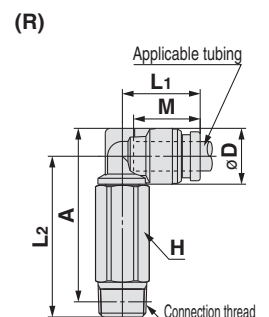
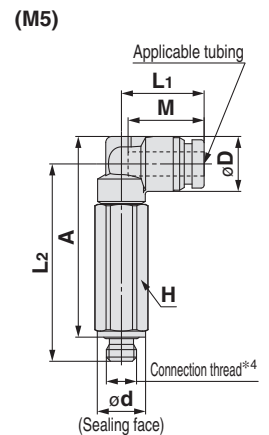


*1 Value of FEP tubing
Value of nylon tubing for Ø 16 only

Extended Male Elbow: KQB2W



Applicable tubing O.D. (mm)	Connection thread R, M	Model	H (Width across flats)	Ø D ^{*1}	Ø d	L1	L2	A ^{*2}	M	Effective area ^{*3} [mm ²]	Weight [g]	
												Ø 3.2
Ø 3.2	1/8	KQB2W23-01-F	10	—	13.6	31.3	33.6	12	15.3			
	1/4	KQB2W23-02-F	14	—	35.1	35.8	34.7					
Ø 4	M5 x 0.8	KQB2W04-M5-F	8	9.1	8	13.7	32.7	33.3	12.6	3	14.3	
	1/8	KQB2W04-01-F	10		—	14.4	31.7	34.4			12.6	16.2
	1/4	KQB2W04-02-F	14		—	35.5	36.6	35.6				
Ø 6	M5 x 0.8	KQB2W06-M5-F	8	11.4	8	14.7	33.8	35.5	13.6	3	16.2	
	1/8	KQB2W06-01-F	10		—	15.9	32.8	36.7			13.6	17.8
	1/4	KQB2W06-02-F	14		—	36.6	38.9	37.2			10.9	37.2
	3/8	KQB2W06-03-F	17		—	38	39.9	60.3				
Ø 8	1/8	KQB2W08-01-F	12	13.7	8	18.6	37	42	16.1	20.5	28.9	
	1/4	KQB2W08-02-F	14		—	19.1	40.2	43.6			39.2	
	3/8	KQB2W08-03-F	17		—	41.6	44.6	63.7				
Ø 10	1/4	KQB2W10-02-F	14	16.6	8	—	46.6	51.5	17	33.5	42.1	
	3/8	KQB2W10-03-F	17		—	21	45.9	50.4			64.5	
	1/2	KQB2W10-04-F	22		—	50.1	53.3	123				
Ø 12	1/4	KQB2W12-02-F	14	18.7	8	—	22.6	47.7	18.6	47.7	46	
	3/8	KQB2W12-03-F	17		—	23.6	49	54.5			58.2	
	1/2	KQB2W12-04-F	22		—	53.2	57.4	118				
Ø 16	3/8	KQB2W16-03-F	19	24.6	8	—	26.3	57.6	20.8	71	89.6	
	1/2	KQB2W16-04-F	22		—	27.3	61.4	67.9			100	116



*1 For the Ø 16, this dimension refers to the O.D. of the release button.
*2 Reference dimensions after installation for R thread
*3 Value of FEP tubing
Value of nylon tubing for Ø 16 only
*4 In the case of M5, the screw length ($\text{Ø } D/2 + L2 - A$) is longer than that of the KQB2 series.

Metal One-touch Fittings

Applicable Tubing: Metric Size, Connection Thread: G*1

KQB2-F Series

*1 ISO 16030 compliant



Applicable Tubing

Tubing material*1	FEP, PFA, Nylon, Soft nylon, Polyurethane, Polyolefin
Tubing O.D.	Ø 4, Ø 6, Ø 8, Ø 10, Ø 12, Ø 16

*1 Considering the product application, FDA-compliant products are recommended.

Specifications

Fluid	Air, Water*1
Operating pressure range*2	-100 kPa to 1 MPa*3
Proof pressure	3.0 MPa
Ambient and fluid temperatures*4	-5 to 150°C (No freezing)*3
Lubricant	NSF H1 grease
Seal on the threads	O-ring seal

*1 Deionised water is not recommended for use as it may affect the material used in the fittings. In addition, it is known to degrade the water quality.

*2 Do not use the fittings with a leak tester or for vacuum retention because they are not guaranteed for zero leakage.

*3 Check the operating pressure range and operating temperature range of the tubing.

*4 It is recommended that you use the inner sleeve in the following conditions.

- When using in an environment where the fluid temperature changes drastically
- When using at a high temperature

* Temperature Condition of Mounting the Inner Sleeve

Tubing	Temperature
FEP tubing/TH series	80°C or more
Super PFA tubing/TL series	120°C or more

Spare Parts

Description	Tubing O.D.	Part no.	Material
Bulkhead nut	Ø 4	KQB223-P01-F	C3604 (Electroless nickel plating)
	Ø 6	KQB206-P01-F	
	Ø 8	KQB208-P01-F	
	Ø 10	KQB210-P01-F	
	Ø 12	KQB212-P01-F	
	Ø 16	KQB216-P01-F	

Description	Thread size	Part no.	Material
G thread O-ring	G1/8	KQB2-G01-F	FDA compliant FKM
	G1/4	KQB2-G02-F	
	G3/8	KQB2-G03-F	
	G1/2	KQB2-G04-F	

Cross Reference Table of the Inner Sleeve

Tubing O.D.	Tubing material			Applicable inner sleeve	
	TUS (Soft polyurethane)	TH/TH (FEP)	TL/TIL (Super PFA)	Part no.	Length
Ø 4	—	TH0402	—	TJG-0402	18
	TUS0425	TH0425	—	TJG-0425	18
	—	—	TL0403	TJG-0403	18
Ø 6	TUS0604	TH0604	TL0604	TJG-0604	19
	TUS0805	—	—	TJG-0805	20.5
Ø 8	—	TH0806	TL0806	TJG-0806	20.5
	TUS1065	—	—	TJG-1065	23
Ø 10	—	TH1075	—	TJG-1075	23
	—	TH1008	TL1008	TJG-1008	23
	TUS1208	—	—	TJG-1008	24
Ø 12	—	TH1209	—	TJG-1209	24
	—	TH1210	TL1210	TJG-1210	24

* Stainless steel 316 is used for the TJG series.

EHEDG Compliant

Metric M, G KFG2H□-E

Clean Design

Metric M, G KFG2H□-C

FDA Compliant

Metric M, R, Rc KQG2-F

Inch UNF, NPT KQG2-F

Metric G KQG2-F

Metric M, R, Rc KQB2-F

Inch UNF, NPT KQB2-F

Metric G KQB2-F

Metric R, Rc KFG2-F

Inch NPT KFG2-F

Metric G KFG2-F

Precautions

KQB2-F Series

Applicable Tubing: Metric Size, Connection Thread: G

How to Order

KQB2 H 04 - G 02 - F

• Body type

Symbol	Model
H	Male connector
S	Hexagon socket head male connector
L	Male elbow
T	Male branch tee
E	Bulkhead connector
W	Extended male elbow
F	Female connector

• FDA compliant

• Thread size

Symbol	Size
01	G1/8
02	G1/4
03	G3/8
04	G1/2

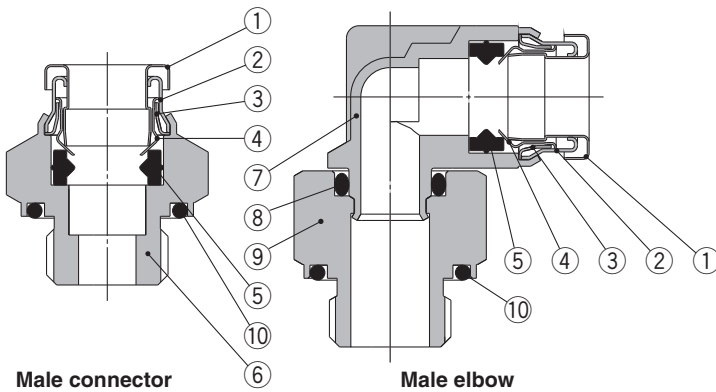
• Tubing size (Metric)

Symbol	Size
23	Ø 3.2
04	Ø 4
06	Ø 6
08	Ø 8
10	Ø 10
12	Ø 12
16	Ø 16

• Thread type

Symbol	Type
G	G

Construction

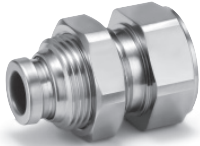


Component Parts

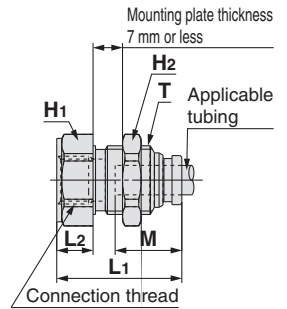
No.	Description	Material
1	Release button	Stainless steel 304
2	Guide 1	Stainless steel 304
3	Guide 2	Stainless steel 304
4	Chuck	Stainless steel 304
5	Seal	FDA compliant FKM (NSF H1 grease)
6	Male connector body	C3604 (Electroless nickel plating)
7	Male elbow body	Stainless steel 316
8	O-ring	FDA compliant FKM (NSF H1 grease)
9	Stud	C3604 (Electroless nickel plating)
10	G thread O-ring	FDA compliant FKM

Dimensions

Bulkhead Connector: KQB2E



Applicable tubing O.D. [mm]	Connection thread G	Model	T (M)	Width across flats		L1	L2	Mounting hole	M	Effective area [mm ²] ^{*1}	Weight [g]
				H1	H2						
Ø 4	1/8	KQB2E04-G01-F	M10 x 1	17	12	27.1	11	11	12.6	5.6	25.1
	1/4	KQB2E04-G02-F		19		32.7	16.6				36.9
Ø 6	1/8	KQB2E06-G01-F	M14 x 1	17		25.5	7.4	15	13.6	13.1	26.8
	3/8	KQB2E06-G03-F		19	17	33.5	15.4				42.7
Ø 8	1/8	KQB2E08-G01-F	M15 x 1	24		35	16.9	16	16.1	26.1	62
	1/4	KQB2E08-G02-F		17		27.6	8.2				30.4
	3/8	KQB2E08-G03-F		19	19	34.5	15.1				43.9
Ø 10	1/4	KQB2E10-G02-F	M18 x 1	24		36	16.6	19	17	41.5	66.2
	3/8	KQB2E10-G03-F		19	21	33.5	13.5				46.8
	1/2	KQB2E10-G04-F		24		35.6	15.6				65.4
Ø 12	3/8	KQB2E12-G03-F	M20 x 1	24	24	35.9	14.7	21	18.6	58.3	119.2
	1/2	KQB2E12-G04-F		27		42.2	21				91.9
Ø 16	3/8	KQB2E16-G03-F	M27 x 1	29	30	37.2	13.1	28	20.8	96	118.2
	1/2	KQB2E16-G04-F		43.1	19	113	128.7				

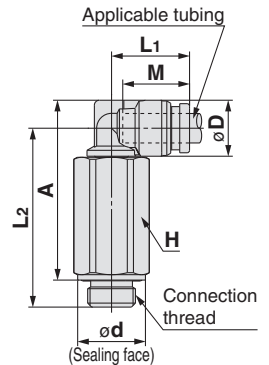


*1 Value of FEP tubing
Value of nylon tubing for Ø 16 only

Extended Male Elbow: KQB2W

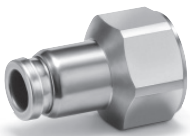


Applicable tubing O.D. [mm]	Connection thread G	Model	H (Width across flats)	Ø D ^{*1}	Ø d	L1	L2	A	M	Effective area [mm ²] ^{*2}	Weight [g]			
												Ø 4	1/8	KQB2W04-G01-F
	1/4	KQB2W04-G02-F	19	17.8	38.7	36.7	70.6							
Ø 6	1/8	KQB2W06-G01-F	14	11.4	13.8	15.9	36.4	36.6	13.6	10.9	36.1			
		1/4	KQB2W06-G02-F								19	17.8	39.8	39
Ø 8	3/8	KQB2W06-G03-F	22		21.8		42.3	40.5			106.7			
	1/8	KQB2W08-G01-F	14	13.7	13.8	18.6	40	41.3	16.1	20.5	41.3			
	1/4	KQB2W08-G02-F	19								17.8	43.4	43.7	76.7
3/8	KQB2W08-G03-F	22	21.8								45.9	45.2	112.9	
Ø 10	1/4	KQB2W10-G02-F	19	16.6	17.8	21	49.8	51.6	17	33.5	84.8			
	3/8	KQB2W10-G03-F	22								21.8	50.2	51	116.6
	1/2	KQB2W10-G04-F	27								26.5	54.2	53.5	196.6
Ø 12	1/4	KQB2W12-G02-F	19	18.7	17.8	22.6	50.9	53.7	18.6	47.7	88.7			
	3/8	KQB2W12-G03-F	22								21.8	53.3	55.1	111.6
	1/2	KQB2W12-G04-F	27								26.5	57.3	57.6	193.8
Ø 16	3/8	KQB2W16-G03-F	22	24.6	21.8	26.3	62	66.1	20.8	71	133.6			
	1/2	KQB2W16-G04-F	27								26.5	27.3	66	68.6

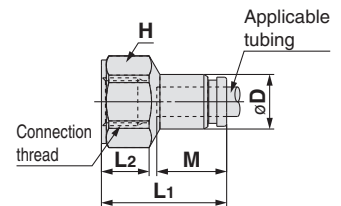


*1 For the Ø 16, this dimension refers to the O.D. of the release button.
*2 Value of FEP tubing
Value of nylon tubing for Ø 16 only

Female Connector: KQB2F



Applicable tubing O.D. [mm]	Connection thread G	Model	H1 (Width across flats)	Ø D ^{*1}	L1	L2	M	Effective area [mm ²] ^{*2}	Weight [g]			
										Ø 4	1/8	KQB2F04-G01-F
	1/4	KQB2F04-G02-F	19	30.6	14.5	32						
Ø 6	1/8	KQB2F06-G01-F	17	11.1	25.5	9.7	13.6	13.1	22.6	22.6		
		1/4	KQB2F06-G02-F							19	31.1	14.7
Ø 8	3/8	KQB2F06-G03-F	24		32.6	14.6				51.1		
	1/8	KQB2F08-G01-F	17	13.4	27.6	10	16.1	26.1	58.3	25.1		
	1/4	KQB2F08-G02-F	19							33.2	14.9	36.3
3/8	KQB2F08-G03-F	24	34.6							14.7	53.8	
Ø 10	1/4	KQB2F10-G02-F	19	16.4	33.5	15.2	17	41.5	58.3	39.9		
	3/8	KQB2F10-G03-F	24							34.9	15	57.7
	1/4	KQB2F12-G02-F	19							34.5	15.2	41.8
Ø 12	3/8	KQB2F12-G03-F	24	18.5	35.9	15	18.6	81	113	59.7		
	1/2	KQB2F12-G04-F	27							41.8	19.9	81.6
	3/8	KQB2F16-G03-F	24							24.6	37.2	15.4
1/2	KQB2F16-G04-F	27	43.1	20.4	89.1							



*1 For the Ø 10, Ø 12, and Ø 16, this dimension refers to the O.D. of the release button.
*2 Value of FEP tubing
Value of nylon tubing for Ø 16 only

EHEHG Compliant

Metric M, G KFG2H□-E

Clean Design

Metric M, G KFG2H□-C

FDA Compliant

Metric M, R, Rc KQG2-F

Inch UNF, NPT KQG2-F

Metric G KQG2-F

Metric M, R, Rc KQB2-F

Inch UNF, NPT KQB2-F

Metric G KQB2-F

Metric R, Rc KFG2-F

Inch NPT KFG2-F

Metric G KFG2-F

Precautions