

# Stainless Steel 316 One-touch Fittings

Applicable Tubing: Metric Size, Connection Thread: M, R, Rc

## KQG2-F Series



EHEDG  
Compliant

Metric M, G  
KFG2H□-E

Clean  
Design

Metric M, G  
KFG2H□-C

FDA  
Compliant

Metric M, R, Rc  
KQG2-F

Inch UNF, NPT  
KQG2-F

Metric G  
KQG2-F

Metric M, R, Rc  
KQB2-F

Inch UNF, NPT  
KQB2-F

Metric G  
KQB2-F

Metric R, Rc  
KFG2-F

Inch NPT  
KFG2-F

Metric G  
KFG2-F

Precautions



### Applicable Tubing

Tubing material*1	FEP, PFA, Nylon, Soft nylon, Polyurethane, Polyolefin
Tubing O.D.	Ø 3.2, Ø 4, Ø 6, Ø 8, Ø 10, Ø 12, Ø 16

\*1 Considering the product application, FDA-compliant products are recommended.

### Specifications

Fluid	Air, Water*1, Steam*2
Operating pressure range*3	-100 kPa to 1 MPa*4
Proof pressure	3.0 MPa
Ambient and fluid temperatures*5	-5 to 150°C (No freezing)*4
Lubricant	NSF H1 grease
Seal on the threads	Without sealant

\*1 Deionised water is not recommended for use as it may affect the material used in the fittings. In addition, it is known to degrade the water quality.

\*2 Please contact SMC for applicable tubing separately.

\*3 Do not use the fittings with a leak tester or for vacuum retention because they are not guaranteed for zero leakage.

\*4 Check the operating pressure range and operating temperature range of the tubing.

\*5 It is recommended that you use the inner sleeve in the following conditions. (Except Ø 3.2)

- When using in an environment where the fluid temperature changes drastically
- When using at a high temperature

#### \* Temperature Condition of Mounting the Inner Sleeve

Tubing	Temperature
FEP tubing/TH series	80°C or more
Super PFA tubing/TL series	120°C or more

### Spare Parts

Description	Tubing O.D.	Part no.	Material
O-ring	—	M-5-F	FDA compliant FKM
Bulkhead nut	Ø 3.2, Ø 4	KQG223-P01	Stainless steel 316
	Ø 6	KQG206-P01	
	Ø 8	KQG208-P01	
	Ø 10	KQG210-P01	
	Ø 12	KQG212-P01	
	Ø 16	KQG216-P01	

### Cross Reference Table of the Inner Sleeve

Tubing O.D.	Tubing material			Applicable inner sleeve	
	TUS (Soft polyurethane)	TH/THI (FEP)	TL/TIL (Super PFA)	Part no.	Length
Ø 4	—	TH0402	—	TJG-0402	18
	TUS0425	TH0425	—	TJG-0425	18
	—	—	TL0403	TJG-0403	18
Ø 6	TUS0604	TH0604	TL0604	TJG-0604	19
	TUS0805	—	—	TJG-0805	20.5
Ø 8	—	TH0806	TL0806	TJG-0806	20.5
	TUS1065	—	—	TJG-1065	23
Ø 10	—	TH1075	—	TJG-1075	23
	—	TH1008	TL1008	TJG-1008	23
	TUS1208	—	—	TJG-1208	24
Ø 12	—	TH1209	—	TJG-1209	24
	—	TH1210	TL1210	TJG-1210	24

\* Stainless steel 316 is used for the TJG series.

# KQG2-F Series

Applicable Tubing: Metric Size, Connection Thread: M, R, Rc

## How to Order

**KQG2 H 04 - 02 - F**

Body type

Symbol	Model
<b>H</b>	Male connector, Straight union, Different diameter straight
<b>S</b>	Hexagon socket head male connector
<b>L</b>	Male elbow, Union elbow
<b>T</b>	Male branch tee, Union tee, Different diameter tee
<b>E</b>	Bulkhead union, Bulkhead connector
<b>U</b>	Union "Y", Different diameter union "Y"
<b>R</b>	Plug-in reducer
<b>W</b>	Extended male elbow
<b>F</b>	Female connector

\* Plugs are excluded as the standard plug is FDA-compliant.

Tubing size (Metric)

Symbol	Size
<b>23</b>	Ø 3.2
<b>04</b>	Ø 4
<b>06</b>	Ø 6
<b>08</b>	Ø 8
<b>10</b>	Ø 10
<b>12</b>	Ø 12
<b>16</b>	Ø 16

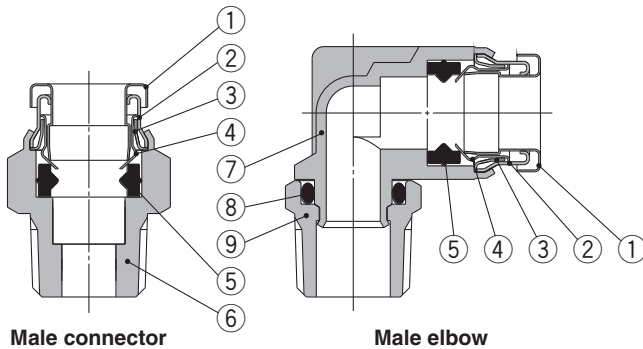
FDA compliant

Thread size, Tubing size

Symbol	Size	
<b>M5</b>	M5 x 0.8	Thread size
<b>01</b>	R1/8, Rc1/8	
<b>02</b>	R1/4, Rc1/4	
<b>03</b>	R3/8, Rc3/8	
<b>04</b>	R1/2, Rc1/2	
<b>00</b>	Same tubing O.D.	Tubing size
<b>04</b>	Ø 4	
<b>06</b>	Ø 6	
<b>08</b>	Ø 8	
<b>10</b>	Ø 10	
<b>12</b>	Ø 12	
<b>16</b>	Ø 16	

\* Sealant is unavailable for this product as no FDA-compliant material is available.

## Construction



## Component Parts

No.	Description	Material
1	Release button	Stainless steel 316
2	Guide 1	Stainless steel 316
3	Guide 2	Stainless steel 316
4	Chuck	Stainless steel 316
5	Seal	FDA compliant FKM (NSF H1 grease)
6	Male connector body	Stainless steel 316
7	Male elbow body	Stainless steel 316 (NSF H1 grease)
8	O-ring	FDA compliant FKM (NSF H1 grease)
9	Stud	Stainless steel 316

# Stainless Steel 316 One-touch Fittings **KQG2-F Series**

Applicable Tubing: Metric Size, Connection Thread: M, R, Rc

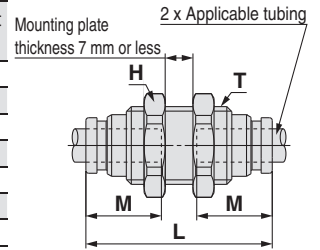
## Dimensions

### Bulkhead Union: KQG2E



Applicable tubing O.D. [mm]	Model	T (M)	H (Width across flats)	L	Mounting hole	M	Effective area [mm <sup>2</sup> ] <sup>*1</sup>	Weight [g]
Ø 3.2	KQG2E23-00-F	M10 x 1	12	32.2	11	12	3.4	14
Ø 4	KQG2E04-00-F	M10 x 1	12	32.4	11	12.6	5.6	14
Ø 6	KQG2E06-00-F	M14 x 1	17	33.6	15	13.6	13.1	25.8
Ø 8	KQG2E08-00-F	M15 x 1	19	36.4	16	16.1	26.1	30.4
Ø 10	KQG2E10-00-F	M18 x 1	21	37.2	19	17	41.5	40.3
Ø 12	KQG2E12-00-F	M20 x 1	24	39.2	21	18.6	58.3	49.9
Ø 16	KQG2E16-00-F	M27 x 1	30	42.6	28	20.8	113	87.3

\*1 Value of FEP tubing  
Value of nylon tubing for Ø 16 only

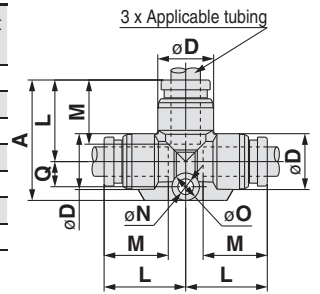


### Union Tee: KQG2T



Applicable tubing O.D. [mm]	Model	Ø <sup>*1</sup>	L	A	Q	M	ØN	ØO	Effective area [mm <sup>2</sup> ] <sup>*2</sup>	Weight [g]
Ø 3.2	KQG2T23-00-F	8.3	13.6	20.5	4.1	12	3.2	5.6	3.4	7.9
Ø 4	KQG2T04-00-F	9.1	14.6	21.8	4.4	12.6	3.2	5.6	6.4	9.5
Ø 6	KQG2T06-00-F	11.4	16.6	24.6	5.2	13.6	3.2	5.6	13.4	14.2
Ø 8	KQG2T08-00-F	13.7	20.1	31.1	7	16.1	4.2	8	25.6	24.4
Ø 10	KQG2T10-00-F	16.6	22	34	8	17	4.2	8	40	36.8
Ø 12	KQG2T12-00-F	18.7	24.6	37.7	9.1	18.6	4.2	8	57.4	46.9
Ø 16	KQG2T16-00-F	24.6	28.8	43.4	10.6	20.8	4.2	8	100	75.5

\*1 For the Ø 16, this dimension refers to the O.D. of the release button.  
\*2 Value of FEP tubing  
Value of nylon tubing for Ø 16 only

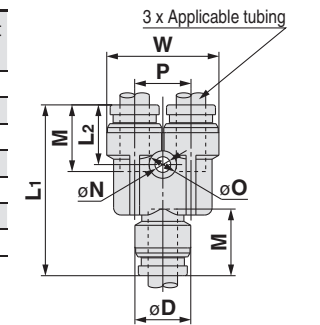


### Union "Y": KQG2U



Applicable tubing O.D. [mm]	Model	Ø <sup>*1</sup>	W	L <sub>1</sub>	L <sub>2</sub>	P	M	ØN	ØO	Effective area [mm <sup>2</sup> ] <sup>*2</sup>	Weight [g]
Ø 3.2	KQG2U23-00-F	8.3	16.4	29	11	8.1	12	3.2	5.6	3.4	9.2
Ø 4	KQG2U04-00-F	9.1	18.2	30.4	11.3	9.1	12.6	3.2	5.6	4.2	11.1
Ø 6	KQG2U06-00-F	11.4	22.9	34.9	12.2	11.5	13.6	3.2	5.6	13.4	18.8
Ø 8	KQG2U08-00-F	13.7	28.3	40.1	14.1	14.6	16.1	4.2	8	25.6	29.7
Ø 10	KQG2U10-00-F	16.6	34.2	44	14.4	17.6	17	4.2	8	40	47.4
Ø 12	KQG2U12-00-F	18.7	38.5	48.4	15.8	19.8	18.6	4.2	8	57.4	62.1
Ø 16	KQG2U16-00-F	24.6	49.3	56.6	17.3	26	20.8	4.2	8	113	110.2

\*1 For the Ø 16, this dimension refers to the O.D. of the release button.  
\*2 Value of FEP tubing  
Value of nylon tubing for Ø 16 only

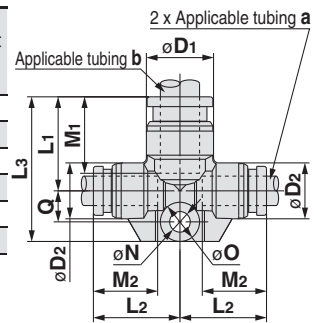


### Different Diameter Tee: KQG2T



Applicable tubing O.D. [mm]		Model	Ø <sup>*1</sup>	Ø <sup>*1</sup>	L <sub>1</sub>	L <sub>2</sub>	L <sub>3</sub>	Q	M <sub>1</sub>	M <sub>2</sub>	ØN	ØO	Effective area [mm <sup>2</sup> ] <sup>*2</sup>	Weight [g]
a	b		Ø <sub>D1</sub>	Ø <sub>D2</sub>										
Ø 3.2	Ø 4	KQG2T23-04-F	9.1	8.3	14.2	14.1	21.1	4.1	12.6	12	3.2	5.6	3.8	8.5
Ø 4	Ø 6	KQG2T04-06-F	11.4	9.1	15.6	15.7	22.8	4.4	13.6	12.6	3.2	5.6	7.1	11.5
Ø 6	Ø 8	KQG2T06-08-F	13.7	11.4	19.1	17.7	29.5	6.4	16.1	13.6	4.2	8	16.4	20
Ø 8	Ø 10	KQG2T08-10-F	16.6	13.7	21	21.2	32.1	7.1	17	16.1	4.2	8	36	29.8
Ø 10	Ø 12	KQG2T10-12-F	18.7	16.6	23.6	23.1	35.7	8.1	18.6	17	4.2	8	56	41.3
Ø 12	Ø 16	KQG2T12-16-F	24.6	18.7	26.8	26.7	39.9	9.1	20.8	18.6	4.2	8	108.5	58

\*1 For the Ø 16, this dimension refers to the O.D. of the release button.  
\*2 Value of FEP tubing

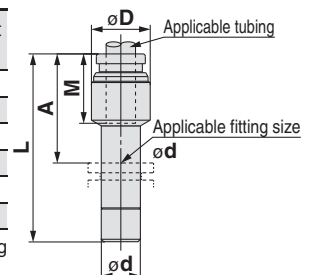


### Plug-in Reducer: KQG2R



Applicable tubing O.D. [mm]	Applicable fitting size Ø d	Model	Ø D	L	A	M	Effective area [mm <sup>2</sup> ] <sup>*1</sup>	Weight [g]
Ø 3.2	Ø 4	KQG2R23-04-F	9	32.9	20.3	12	3.4	4.7
Ø 4	Ø 6	KQG2R04-06-F	9	34.4	20.8	12.6	5.6	6.7
Ø 6	Ø 8	KQG2R06-08-F	12	38.4	22.3	13.6	13.1	12.1
Ø 8	Ø 10	KQG2R08-10-F	14	41.9	24.9	16.1	26.1	18.3
Ø 10	Ø 12	KQG2R10-12-F	17	44.8	26.2	17	41.5	26.5
Ø 12	Ø 16	KQG2R12-16-F	19	42.9	22.1	18.6	58.3	35.4

\*1 Value of FEP tubing



EHEHG  
Compliant

Metric M, G  
KFG2H□-E

Clean  
Design

Metric M, G  
KFG2H□-C

FDA  
Compliant

Metric M, R, Rc  
KQG2-F

Inch UNF, NPT  
KQG2-F

Metric G  
KQG2-F

Metric M, R, Rc  
KQB2-F

Inch UNF, NPT  
KQB2-F

Metric G  
KQB2-F

Metric R, Rc  
KFG2-F

Inch NPT  
KFG2-F

Metric G  
KFG2-F

Precautions

# KQG2-F Series

Applicable Tubing: Metric Size, Connection Thread: M, R, Rc

## Dimensions

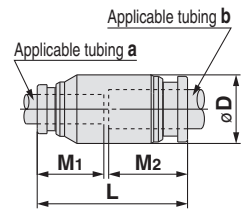
### Different Diameter Straight: KQG2H



Applicable tubing O.D. [mm]		Model	Ø D*1	L	M1	M2	Effective area [mm <sup>2</sup> ] <sup>*2</sup>	Weight [g]
a	b							
Ø 3.2	Ø 4	KQG2H23-04-F	9	25.6	12	12.6	3.4	6.5
Ø 4	Ø 6	KQG2H04-06-F	12	27.2	12.6	13.6	5.6	11.6
Ø 6	Ø 8	KQG2H06-08-F	14	30.7	13.6	16.1	13.1	16.3
Ø 8	Ø 10	KQG2H08-10-F	17	34.1	16.1	17	26.1	26
Ø 10	Ø 12	KQG2H10-12-F	19	36.6	17	18.6	41.5	33.3
Ø 12	Ø 16	KQG2H12-16-F	24.6	40.4	18.6	20.8	58.3	54.7

\*1 For the Ø 16, this dimension refers to the O.D. of the release button.

\*2 Value of FEP tubing



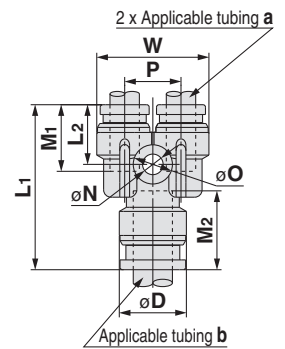
### Different Diameter Union "Y": KQG2U



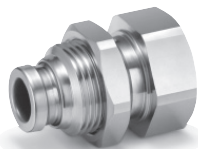
Applicable tubing O.D. [mm]		Model	Ø D*1	L1	L2	P	W	M1	M2	Ø N	Ø O	Effective area [mm <sup>2</sup> ] <sup>*2</sup>	Weight [g]
a	b												
Ø 3.2	Ø 4	KQG2U23-04-F	9.1	27	10.8	8.1	16.4	12	12.6	3.2	5.6	3.2	8.5
Ø 4	Ø 6	KQG2U04-06-F	11.4	29.3	11.2	9.1	18.2	12.6	13.6	3.2	5.6	4.2	11.9
Ø 6	Ø 8	KQG2U06-08-F	13.7	33.7	12.2	11.5	22.9	13.6	16.1	4.2	8	13.4	19.3
Ø 8	Ø 10	KQG2U08-10-F	16.6	38.3	13.8	14.6	28.3	16.1	17	4.2	8	25.6	31.6
Ø 10	Ø 12	KQG2U10-12-F	18.7	43	14	17.6	34.2	17	18.6	4.2	8	40	47.6
Ø 12	Ø 16	KQG2U12-16-F	24.6	47.4	15.6	19.8	38.5	18.6	20.8	4.2	8	57.4	67.6

\*1 For the Ø 16, this dimension refers to the O.D. of the release button.

\*2 Value of FEP tubing

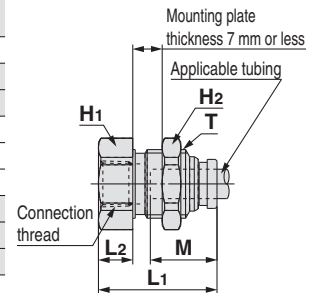


### Bulkhead Connector: KQG2E



Applicable tubing O.D. [mm]	Connection thread Rc	Model	T (M)	Width across flats		L1	L2	Mounting hole	M	Effective area [mm <sup>2</sup> ] <sup>*1</sup>	Weight [g]		
				H1	H2								
Ø 3.2	1/4	KQG2E23-02-F	M10 x 1	17	12	31	14.8	11	12	3.4	26.1		
Ø 4	1/8	KQG2E04-01-F	M10 x 1	14	12	25.8	9.7	11	12.6	5.6	16		
	1/4	KQG2E04-02-F		17	12	30.9	14.8				25.6		
Ø 6	1/8	KQG2E06-01-F	M14 x 1	17	17	24.2	7	15	13.6	13.1	24.4		
	1/4	KQG2E06-02-F				30.9	13.7				30.9		
	3/8	KQG2E06-03-F				19	14.9				32.1	14.9	32
Ø 8	1/8	KQG2E08-01-F	M15 x 1	17	19	26.3	8.1	16	16.1	26.1	28		
	1/4	KQG2E08-02-F				31.3	13.1				31.3	13.1	31.2
	3/8	KQG2E08-03-F				19	14.6				32.8	14.6	32.7
Ø 10	1/4	KQG2E10-02-F	M18 x 1	19	21	31.6	13	19	17	41.5	42.8		
	3/8	KQG2E10-03-F				33	14.4				33	14.4	37.5
Ø 12	3/8	KQG2E12-03-F	M20 x 1	21	24	34	14.4	21	18.6	58.3	50.3		
	1/2	KQG2E12-04-F		24	24	39.3	19.7				60.7		
Ø 16	3/8	KQG2E16-03-F	M27 x 1	29	30	35.3	13.3	28	20.8	96	107.8		
	1/2	KQG2E16-04-F				40.6	18.6				113	114.6	

\*1 Value of FEP tubing  
Value of nylon tubing for Ø 16 only



## FDA Compliant Fittings

# Stainless Steel 316 One-touch Fittings

Applicable Tubing: Metric Size, Connection Thread: G\*1

# KQG2-F Series

\*1 ISO 16030 compliant



## Certified to meet current Food Sanitation Law standards

Component materials have met apparatus and container-package standards.

(This includes compliance with article 18, paragraph 3 of the amended Food Sanitation Act (June 2020) and the Ministry of Health and Welfare Notification No. 370.)

## Spare Parts

Description	Tubing O.D.	Part no.	Material
Bulkhead nut	Ø 4	<b>KQG223-P01</b>	Stainless steel 316
	Ø 6	<b>KQG206-P01</b>	
	Ø 8	<b>KQG208-P01</b>	
	Ø 10	<b>KQG210-P01</b>	
	Ø 12	<b>KQG212-P01</b>	
	Ø 16	<b>KQG216-P01</b>	

Description	Thread size	Part no.	Material
G thread O-ring	G1/8	<b>KQB2-G01-F</b>	FDA compliant FKM
	G1/4	<b>KQB2-G02-F</b>	
	G3/8	<b>KQB2-G03-F</b>	
	G1/2	<b>KQB2-G04-F</b>	

## Applicable Tubing

Tubing material*1	FEP, PFA, Nylon, Soft nylon, Polyurethane, Polyolefin
Tubing O.D.	Ø 4, Ø 6, Ø 8, Ø 10, Ø 12, Ø 16

\*1 Considering the product application, FDA-compliant products are recommended.

## Specifications

Fluid	Air, Water*1, Steam*2
Operating pressure range*3	-100 kPa to 1 MPa*4
Proof pressure	3.0 MPa
Ambient and fluid temperatures*5	-5 to 150°C (No freezing)*4
Lubricant	NSF H1 grease
Seal on the threads	O-ring seal

\*1 Deionised water is not recommended for use as it may affect the material used in the fittings. In addition, it is known to degrade the water quality.

\*2 Please contact SMC for applicable tubing separately.

\*3 Do not use the fittings with a leak tester or for vacuum retention because they are not guaranteed for zero leakage.

\*4 Check the operating pressure range and operating temperature range of the tubing.

\*5 It is recommended that you use the inner sleeve in the following conditions.

- When using in an environment where the fluid temperature changes drastically
- When using at a high temperature

### \* Temperature Condition of Mounting the Inner Sleeve

Tubing	Temperature
FEP tubing/TH series	80°C or more
Super PFA tubing/TL series	120°C or more

## Cross Reference Table of the Inner Sleeve

Tubing O.D.	Tubing material			Applicable inner sleeve	
	TUS (Soft polyurethane)	TH/THH (FEP)	TL/TIL (Super PFA)	Part no.	Length
Ø 4	—	TH0402	—	<b>TJG-0402</b>	18
	TUS0425	TH0425	—	<b>TJG-0425</b>	18
	—	—	TL0403	<b>TJG-0403</b>	18
Ø 6	TUS0604	TH0604	TL0604	<b>TJG-0604</b>	19
	TUS0805	—	—	<b>TJG-0805</b>	20.5
Ø 8	—	TH0806	TL0806	<b>TJG-0806</b>	20.5
	TUS1065	—	—	<b>TJG-1065</b>	23
Ø 10	—	TH1075	—	<b>TJG-1075</b>	23
	—	TH1008	TL1008	<b>TJG-1008</b>	23
	TUS1208	—	—	<b>TJG-1208</b>	24
Ø 12	—	TH1209	—	<b>TJG-1209</b>	24
	—	TH1210	TL1210	<b>TJG-1210</b>	24

\* Stainless steel 316 is used for the TJG series.

EHDG Compliant

Metric M, G KFG2H□-E

Clean Design

Metric M, G KFG2H□-C

FDA Compliant

Metric M, R, Rc KQG2-F

Inch UNF, NPT KQG2-F

Metric G KQG2-F

Metric M, R, Rc KQB2-F

Inch UNF, NPT KQB2-F

Metric G KQB2-F

Metric R, Rc KFG2-F

Inch NPT KFG2-F

Metric G KFG2-F

Precautions

# KQG2-F Series

Applicable Tubing: Metric Size, Connection Thread: G

## How to Order

**KQG2 H 04 - G 02 - F**

• Body type

Symbol	Model
<b>H</b>	Male connector
<b>S</b>	Hexagon socket head male connector
<b>L</b>	Male elbow
<b>T</b>	Male branch tee
<b>E</b>	Bulkhead connector
<b>W</b>	Extended male elbow
<b>F</b>	Female connector

• FDA compliant

• Thread size

Symbol	Size
<b>01</b>	G1/8
<b>02</b>	G1/4
<b>03</b>	G3/8
<b>04</b>	G1/2

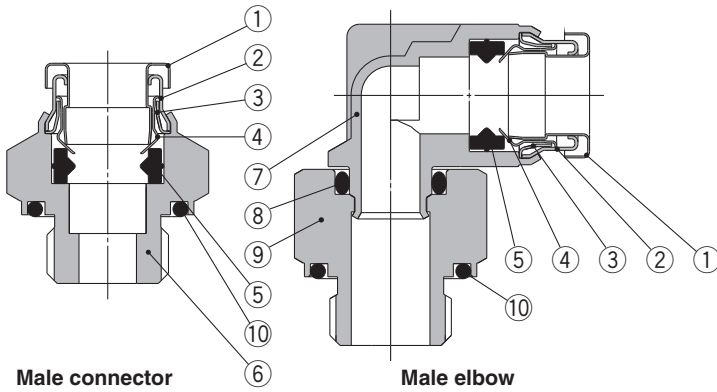
• Tubing size (Metric)

Symbol	Size
<b>04</b>	Ø 4
<b>06</b>	Ø 6
<b>08</b>	Ø 8
<b>10</b>	Ø 10
<b>12</b>	Ø 12
<b>16</b>	Ø 16

• Thread type

Symbol	Type
<b>G</b>	G

## Construction



### Component Parts

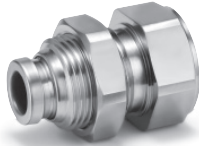
No.	Description	Material
<b>1</b>	<b>Release button</b>	Stainless steel 316
<b>2</b>	<b>Guide 1</b>	Stainless steel 316
<b>3</b>	<b>Guide 2</b>	Stainless steel 316
<b>4</b>	<b>Chuck</b>	Stainless steel 316
<b>5</b>	<b>Seal</b>	FDA compliant FKM (NSF H1 grease)
<b>6</b>	<b>Male connector body</b>	Stainless steel 316
<b>7</b>	<b>Male elbow body</b>	Stainless steel 316 (NSF H1 grease)
<b>8</b>	<b>O-ring</b>	FDA compliant FKM (NSF H1 grease)
<b>9</b>	<b>Stud</b>	Stainless steel 316
<b>10</b>	<b>G thread O-ring</b>	FDA compliant FKM

# Stainless Steel 316 One-touch Fittings **KQG2-F Series**

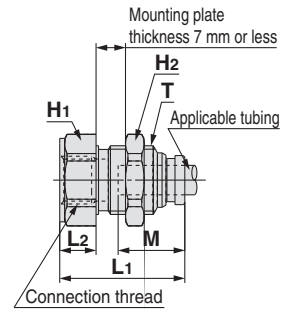
Applicable Tubing: Metric Size, Connection Thread: G

## Dimensions

### Bulkhead Connector: KQG2E



Applicable tubing O.D. [mm]	Connection thread G	Model	T (M)	Width across flats		L1	L2	Mounting hole	M	Effective area [mm <sup>2</sup> ] <sup>*1</sup>	Weight [g]
				H1	H2						
Ø 4	1/8	KQG2E04-G01-F	M10 x 1	17	12	27.1	11	11	12.6	5.6	23.8
	1/4	KQG2E04-G02-F		19		32.7	16.6				34.9
Ø 6	1/8	KQG2E06-G01-F	M14 x 1	17		25.5	7.4	15	13.6	13.1	26
	1/4	KQG2E06-G02-F		19	17	33.5	15.4				39.9
	3/8	KQG2E06-G03-F		24		35	16.9				57.8
Ø 8	1/8	KQG2E08-G01-F	M15 x 1	17		27.6	8.2	16	16.1	26.1	29.6
	1/4	KQG2E08-G02-F		19	19	34.5	15.1				40.3
	3/8	KQG2E08-G03-F		24		36	16.6				58.1
Ø 10	1/4	KQG2E10-G02-F	M18 x 1	19		33.5	13.5	19	17	41.5	45.1
	3/8	KQG2E10-G03-F		24	21	35.6	15.6				61.4
	1/2	KQG2E10-G04-F		27							
Ø 12	3/8	KQG2E12-G03-F	M20 x 1	24	24	35.9	14.7	21	18.6	58.3	65.7
	1/2	KQG2E12-G04-F		27		42.2	21				88.5
Ø 16	3/8	KQG2E16-G03-F	M27 x 1	29	30	37.2	13.1	28	20.8	96	114.7
	1/2	KQG2E16-G04-F		30		43.1	19				124.2

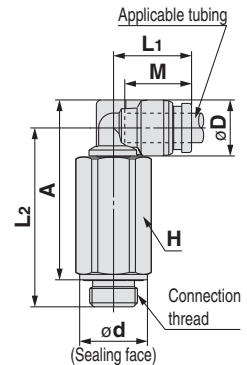


\*1 Value of FEP tubing  
Value of nylon tubing for Ø 16 only

### Extended Male Elbow: KQG2W

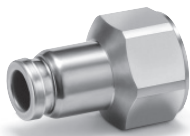


Applicable tubing O.D. [mm]	Connection thread G	Model	H (Width across flats)	Ø D <sup>*1</sup>	Ø d	L1	L2	A	M	Effective area [mm <sup>2</sup> ] <sup>*2</sup>	Weight [g]
	1/4	KQG2W04-G02-F	19	17.8		38.7	36.7	68.6			
Ø 6	1/8	KQG2W06-G01-F	14	11.4	13.8		36.4	36.6	13.6	10.9	34.5
	1/4	KQG2W06-G02-F	19		17.8	15.9	39.8	39			70.2
	3/8	KQG2W06-G03-F	22		21.8		42.3	40.5			102.9
Ø 8	1/8	KQG2W08-G01-F	14	13.7	13.8	18.6	40	41.3	16.1	20.5	39.6
	1/4	KQG2W08-G02-F	19		17.8	19.1	43.4	43.7			73.1
	3/8	KQG2W08-G03-F	22		21.8		45.9	45.2			107.4
Ø 10	1/4	KQG2W10-G02-F	19	16.6	17.8		49.8	51.6	17	33.5	81.1
	3/8	KQG2W10-G03-F	22		21.8	21	50.2	51			113.6
	1/2	KQG2W10-G04-F	27		26.5		54.2	53.5			189.8
Ø 12	1/4	KQG2W12-G02-F	19	18.7	17.8	22.6	50.9	53.7	18.6	47.7	85
	3/8	KQG2W12-G03-F	22		21.8	23.6	53.3	55.1			106.8
	1/2	KQG2W12-G04-F	27		26.5		57.3	57.6			184.8
Ø 16	3/8	KQG2W16-G03-F	22	24.6	21.8	26.3	62	66.1	20.8	71	128.2
	1/2	KQG2W16-G04-F	27		26.5	27.3	66	68.6			192.9

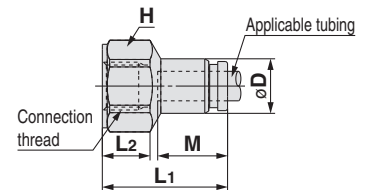


\*1 For the Ø 16, this dimension refers to the O.D. of the release button.  
\*2 Value of FEP tubing  
Value of nylon tubing for Ø 16 only

### Female Connector: KQG2F



Applicable tubing O.D. [mm]	Connection thread G	Model	H1 (Width across flats)	Ø D <sup>*1</sup>	L1	L2	M	Effective area [mm <sup>2</sup> ] <sup>*2</sup>	Weight [g]
	1/4	KQG2F04-G02-F	19	30.6	14.5	30.4			
Ø 6	1/8	KQG2F06-G01-F	17	11.1	25.5	9.7	13.6	13.1	21.4
	1/4	KQG2F06-G02-F	19		31.1	14.7			32
	3/8	KQG2F06-G03-F	24		32.6	14.6			48.5
Ø 8	1/8	KQG2F08-G01-F	17	13.4	27.6	10	16.1	26.1	23.8
	1/4	KQG2F08-G02-F	19		33.2	14.9			34.5
	3/8	KQG2F08-G03-F	24		34.6	14.7			51
Ø 10	1/4	KQG2F10-G02-F	19	16.4	33.5	15.2	17	41.5	37.9
	3/8	KQG2F10-G03-F	24		34.9	15			54.8
	1/4	KQG2F12-G02-F	19		34.5	15.2			39.8
Ø 12	3/8	KQG2F12-G03-F	24	18.5	35.9	15	18.6	58.3	56.7
	1/2	KQG2F12-G04-F	27		41.8	19.9			77.5
Ø 16	3/8	KQG2F16-G03-F	24	24.6	37.2	15.4	20.8	81	63.3
	1/2	KQG2F16-G04-F	27		43.1	20.4			113



\*1 For the Ø 10, Ø 12, and Ø 16, this dimension refers to the O.D. of the release button.  
\*2 Value of FEP tubing  
Value of nylon tubing for Ø 16 only